

The Book of Routes v1.4



This booklet contains a number of suggested routes for those who would like to practice various forms of navigation as well as ride sharing. The routes were copied from those that have appeared in the MAFC newsletter.

If you have an idea for a route that you would like to add to this booklet, contact one of the newsletter editors.

IMPORTANT NOTE: Some of the sectional plates show TFR areas. These are probably no longer in effect but you should always double check.

Notes:

- A. Almost all will start at N12 and end at N12
- B. Most have a target midway point.
- C. Most have the same number of legs going and returning
- D. All provide an opportunity to use multiple navigational techniques.
- E. All allow you to ride share with another pilot so that one is flying outbound and the other the inbound leg.
- F. These can be edited to better meet your particular interests and abilities.
- G. All require that you obey all of the rules and regulations set forth by the FAA and other regulatory agencies.
- H. All are different in that some are around-the-corner while others will take you over an hour or more to navigate one way.
- I. All can be flown in reverse order.
- J. Most involve airports, navigational systems, etc. that are found on paper sectional charts as well as the electronic versions of them.
- K. The attributes listed with each course are simply a few suggestions and should not be considered the only characteristics to be looked at.
- L. Always check TFR listings before heading out! Between sporting events, and other activities, the restrictive TFRs will be a fact of life for years to come.
- M. Many of the courses include way points that take you over a VOR or an airport. You do not have to actually fly over them, they can simply be seen and recognized. If you do fly over these points, be extremely careful and always watch for other traffic. You are the PIC and are solely responsible for the flight.
- N. All course directions are shown simply as general guides, you must verify the numbers and figure in headings involving wind direction.
- O. If a route's attributes state that there is a restaurant or attraction at the airport, *make sure you call first to verify that it is still in business and, if so, that it will be open when you arrive.*

Course #1. Attributes

- A. Route: N12 Lakewood to Coyle VOR to KVAY South Jersey Regional to N87 Trenton Robbinsville to N12 Lakewood**
- B. Goal point- KVAY, South Jersey Regional Airport**
- C. Two segments per leg.**
- D. Total distance about 81 nm.**
- E. At KVAY there is a great restaurant there plus the Air Victory Museum is next door.**



Course #2

- A. Route: N12 Lakewood to Coyle VOR to KWWD Cape May to KMJX Ocean County Municipal to N12 Lakewood.**
- B. Goal Point- KWWD**
- C. Two segments per leg.**
- D. Total distance about 144 nm.**
- E. At KWWD there is a great restaurant on the field plus the Naval Air Station Wildwood Aviation Museum is next to it.**





Course #3 Attributes

- A. Route: N12 Lakewood to CYN Coyle VOR to N81 Hammonton to 26N Ocean City NJ to 31E to Eagles Nest to Barnegat Light to N12 Lakewood**
- B. Goal point- 26N Ocean City Airport**
- C. Three segments per leg**
- D. You can engage ATC at KACY Atlantic City**
- E. Total distance about 119 nm.**
- F. Great place to eat right on airport grounds**

Course #4 Attributes

- A. Route: N12 Lakewood to COL Colts Neck VOR to 39N Princeton to N87 Trenton Robbinsville to N12 Lakewood**
- B. Goal point- 39N Princeton**
- C. Two segments per leg**
- D. See Princeton University to the south and a large mining area to the north.**
- E. Total distance about 70 nm.**
- F. Vending machine only so if you are going for lunch, take your own brown bag.**



Course #5: Attributes

- A. Route: THIS ROUTE DOES NOT START OR END AT N12-- KTTN Trenton Mercer to KPNE North Philadelphia to 17N Cross Keys to VCN Cedar Lake VOR to KMIV Millville to KOB1 Ocean City to KACY Atlantic City to VCN Cedar Lake VOR to 17N Cross Keys to KPNE North Philadelphia to KTTN Trenton Mercer**
- B. Goal Point: KOB1 Ocean City**
- C. Five segments per leg.**
- D. Total distance: 198 nm (36 to/from N12 to KTTN+ 162 nm Course)**
- E. Takes you through Class B, C, D, E and G airspace.**
- F. Great restaurant at KOB1.**



Course #6 Attributes

- A. Route: N12 Lakewood to N87 Trenton Robbinsville to N81 Hammonton to Baregat Light to N12 Lakewood**
- B. Goal point- N81 Hammonton Airport**
- C. Two segments per leg**
- D. You should talk to KWRI McGuire.**
- E. Check to see that NJ24 Warren Grove is cold. If it is, take a good look at the targets!**
- E. Total distance about 104 nm.**
- F. Great place to eat right on airport grounds at N81.**



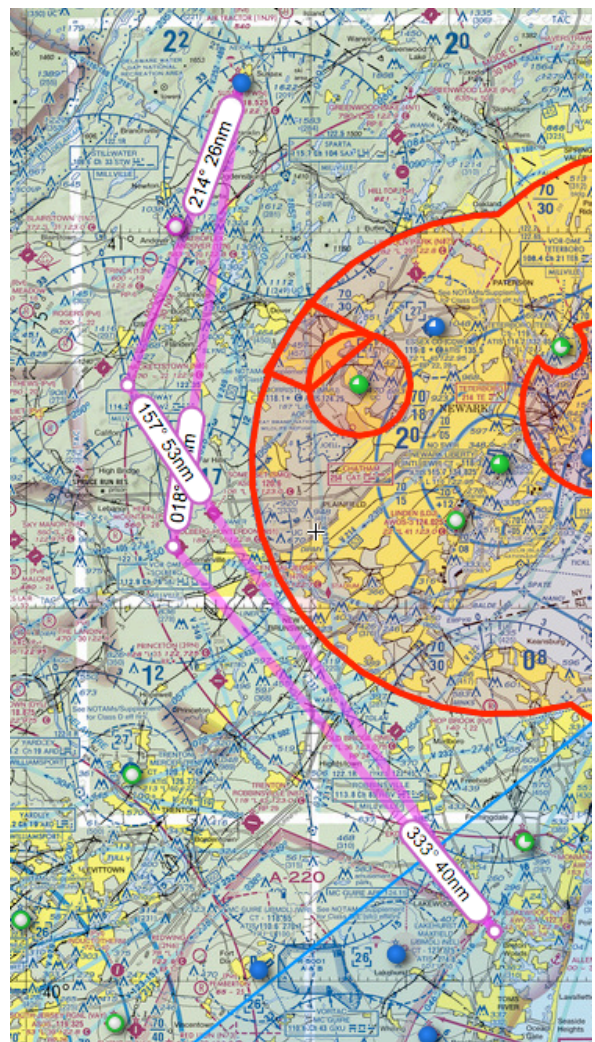
A. Course #7 Attributes

Route: N12 Lakewood to KMXJ Ocean County to PANZE to CYN VOR to N81 Hammonton to N14 Flying W to KORRY to N87 Trenton Robbinsville to DIXIE to N12 Lakewood

- B. Goal Point: N81 Hammonton**
- C. Leg Segments: 4 segments per leg**
- D. Involves airports, VORs, Federal Airway intersections**
- E. Total flight distance: 118 nm**
- F. Note that the restaurant at N81 Hammonton is now closed.**

Course #8. Attributes

- A. Route: N12 Lakewood to SBJ Solberg VOR to KFWN Sussex Airport to BWZ Broadway VOR to N12**
- B. Goal point: KFWN Sussex Airport**
- C. Two segment per leg.**
- D. Total distance 156 nm**
- E. Great restaurant at Sussex Airport just outside of the gate. A throwback to the 1950s**



Course #9. Attributes



- A. Route: N12 Lakewood to ARD
Yardley VOR to N40 Sky
Manor Airport to 47N Central
Jersey Airport to N12.**
- B. Target is N40 Sky Mano Airport**
- C. Two segment per leg.**
- D. Total distance 106 nm**
- E. Great restaurant at Sky Manor!**

Course #10: Attributes

- A. Route: N12 Lakewood to KMJX
Ocean County Airport to 17N
Cross keys Airport to KMIV
Millville to 26N Ocean City to
PANZE to N12 Lakewood**
- B. Target is KMIV Millville**
- C. Three segments per leg**
- D. Total distance 145 nm**
- E. Great restaurant at KMIV**



Course #11. Attributes

- A. Route: N12 Lakewood to 3N6 Old Bridge Airport to N40 Sky Manor Airport to KCKZ Pennridge Airport to ARD Yardley VOR to N87 Trenton Robbinsville to N12 Lakewood.**
- B. Target is KCKZ Pennridge Airport**
- C. Three segment per leg.**
- D. Total distance 123 nm**
- E. Brown bag to Pennridge or take a cab/walk 1.9 miles to Country Place Restaurant on Rt 313 or walk 1 mile to The Rock Hill Filling Station**
- F. KTTN is a Class D airport that you can fly over or through but walk to ATC if you do.**



Course # 12 Attributes

- A. Route: N12 Lakewood to KBLM Monmouth Airport to SBJ VOR to N40 Sky Manor to 39N Princeton to 3N6 Old Bridge Airport to N12 Lakewood**
- B. Target Sky Manor Airport**
- C. Three segments per leg**
- D. Total distance 106 nm**
- E. Very good restaurant at Sky Manor Airport.**





Course #13: Attributes

- A. Route: N12 to 39N Princeton to 1N7 Blairstown to N40 Sky Manor to N12 Lakewood
- B. Target is 1N7 Blairstown
- C. Two segment per leg.
- D. Total distance 139 nm
- E. Beautiful terrain and a great restaurant on the field in Blairstown

Course #14: Attributes

- A. Route: N12 to CYN (VOR) 231°, 19 nm, CYN(VOR) to ACY (VOR) 207° 23 nm, ACY (Terminal VOR with a 10 mile radius) to ENO (VOR) 263° 46 nm, ENO (VOR) to Delaware Coastal Airport KGED 176° 33 nm (note that this intersect Dover (KDOV) airspace, Delaware Coastal Airport KGED to ATR (VOR) 052° 10 nm. ATR (VOR) to SIE (VOR) 057° 26 nm, SIE (VOR) to Barnegat Lighthouse 047° 51 nm, Barnegat Lighthouse to N12 003° 18 nm

- B. This flight should be at or above 4500 feet southwest bound and 5500 feet east & NE bound to stay above the airspaces but communicating with WRI, ACY, DOV ATCs throughout the flight is highly recommended for Safety.

- C. There are several airports along this route where restaurants are available on the field but you need to check to see that they are open.

- D. Beautiful scenery while flying over the river with whales seen at certain times of the year.

- E. Total distance 226 nm



Course #15: (The Crooked S) Attributes:

- A. Route: N12 to 3N6 Old Bridge to N87 Trenton Robbinsville to KTTN Trenton Mercer to N40 Sky Manor to SBJ Solberg VOR to 47N Central Jersey to SBJ Solberg to N40 Sky manor to KTTN Trenton Mercer to N87 Trenton Robbinsville to 3N6 Old Bridge to N12 Lakewood**
- B. Target is 47N Central Jersey**
- C. Six segment per leg.(Out & Inbound course identical)**
- D. Total distance 158 nm**
- E. Great restaurant right next to 47N Central Jersey**
- F. Can involve Pilotage, Dead Reckoning, GPS and VOR or any combination of these.**
- G. If flying with Flight Following you will talk to McGuire, Philadelphia, Allentown and New York. However, you can ask to omit Allentown noting you will be heading east after leaving N40, Sky Manor.**
- H. All of the airports aside from N12 and 47N are flyovers.**
- I. You cover Class D, Class E and Class G airspace.**
- J. Explain to ATC that you are doing a practice navigation exercise.**

